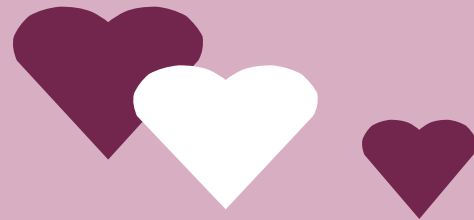


## **Sexual ORIENTATION**

- **Enduring emotional, spiritual, romantic, or sexual attraction that a person feels toward another person**
- **One's natural fondness or affection for another person**
- **One's inherent or innate sexual interest in members of the same, opposite, or both sexes**
- **One's intimate or erotic relationship with another person**
- **One's feelings of love for another person**
- **An inner sense of identity with regard to one's sexual disposition**

**NOT A CHOICE**  
**NOT A LIFESTYLE**  
**NOT A BEHAVIOR**



### **HETEROSEXUAL**

**Opposite-Sex Attraction**  
**Straight**

### **HOMOSEXUAL**

**Same-Sex Attraction**  
**Gay (Male)**  
**Lesbian (Female)**

### **BISEXUAL**

**Attraction to Both**

### **PANSEXUAL**

**Or Omnisexual**  
**Attraction to All**

### **POLYSEXUAL**

**Attraction to Many**

### **ASEXUAL**

**Or Ambisexual**  
**Or Demisexual**  
**Attraction is Non-Existent,**  
**Not Relevant, Non-Sexual,**  
**Fluid, Ambiguous,**  
**or Not Defined**